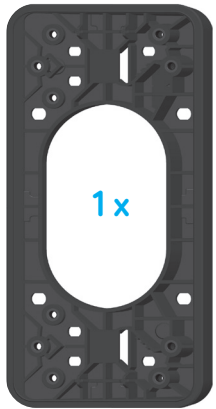




# vidoora

### Package contents

1 x 15° angle adapter and mounting material



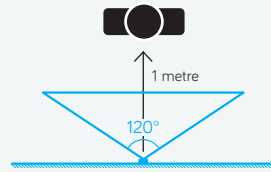
+



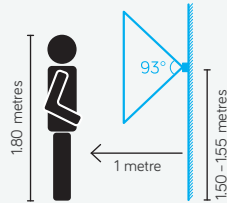
## Positioning

Select a position that enables the camera to capture all visitors at face-height. The perspective of the camera must also be taken into account.

### Horizontal perspective



### Vertical perspective



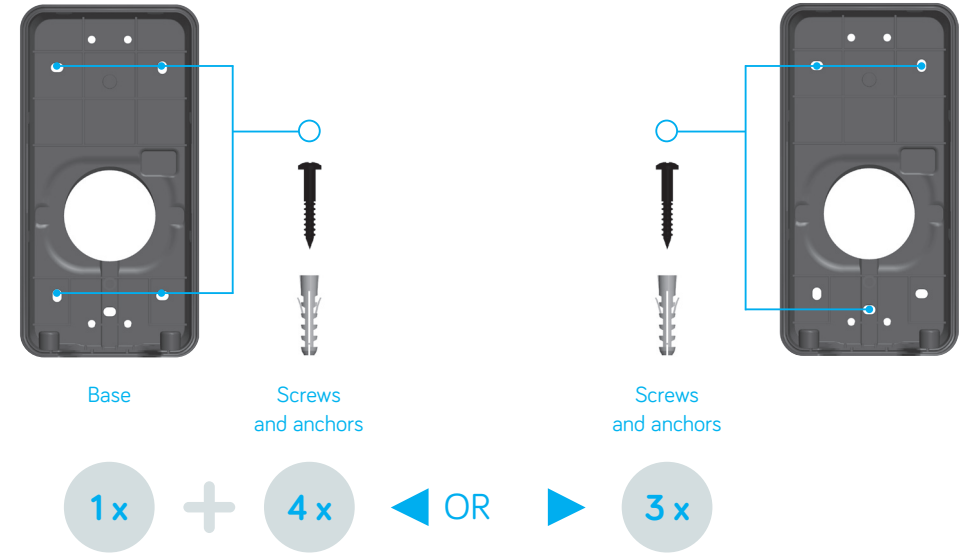
Recommended installation height (bottom edge of the door station, measured from the ground up): 1.50 – 1.55 metres.

## Assembly

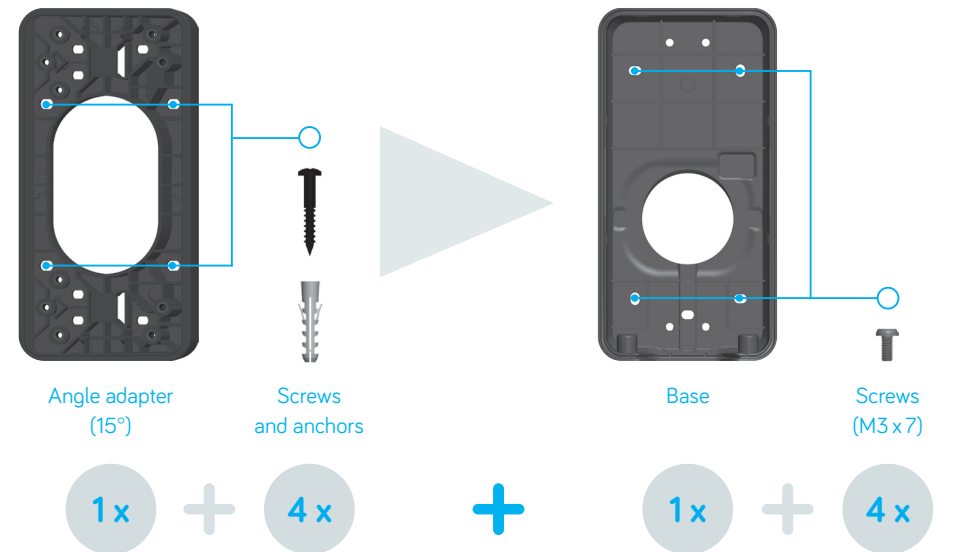
Open the housing by removing the screws on the bottom section and carefully folding the housing open. Make sure to fold open the lower part of the front section first.

1. If mounting without angle adapter (see 0° mounting), mount the housing base of the vidoora door station on the wall using the installation materials included in the vidoora package.
2. If mounting with angle adapter, please observe the instructions for mounting at 15°, 30° and 45° (on this page and on the reverse).

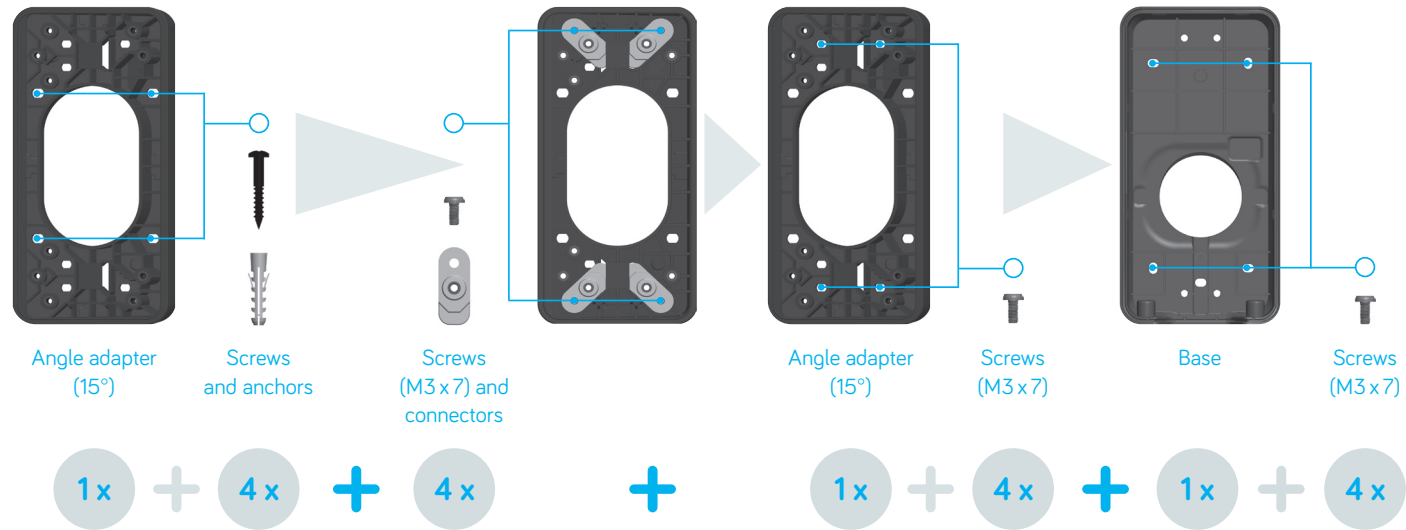
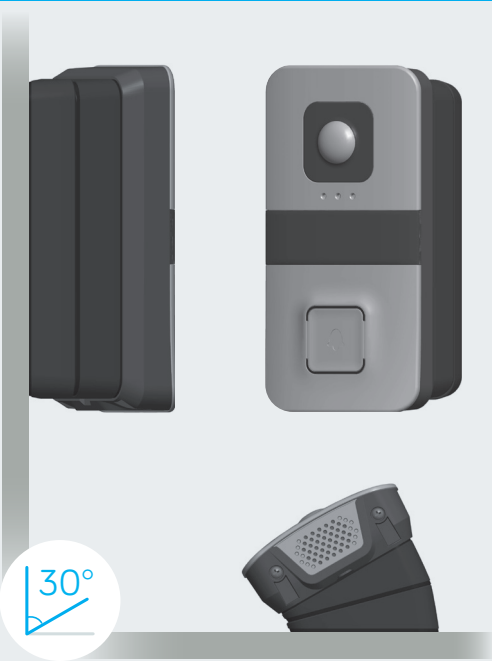
## 0° mounting (without adapter)



## 15° mounting (1 adapter)



## 30° mounting (2 adapters)



## 45° mounting (3 adapters)

